

Configuring Blind Controllers

Each blind control occupies a single channel. The channel number (Module & Channel) must be set, along with the default up & down times before the blind control can be used. All blind controls are sent from the factory responding to Module 1, Channel 1.

Step 1

In the installer configuration program locate an unused dimmer module (on the site screen) and enter 7777 as a dummy module number. This enables the Module button in the Dimmers Screen.

FlexiDim™ Installer Configuration

File Mode View Tools Not connected

Site details

Site ID 0101 : 0001 Longitude 0'00" E Latitude 0'00" N

Dimmer Modules

Dimmer 1 ID	3000
Dimmer 2 ID	3010
Dimmer 3 ID	3020
Dimmer 4 ID	3030
Dimmer 5 ID	
Dimmer 6 ID	
Dimmer 7 ID	
Dimmer 8 ID	
Dimmer 9 ID	
Dimmer 10 ID	7777
Dimmer 11 ID	
Dimmer 12 ID	
Dimmer 13 ID	
Dimmer 14 ID	
Dimmer 15 ID	
Dimmer 16 ID	

Resilient

Connection type TCP

IP Address 192.168.2.2

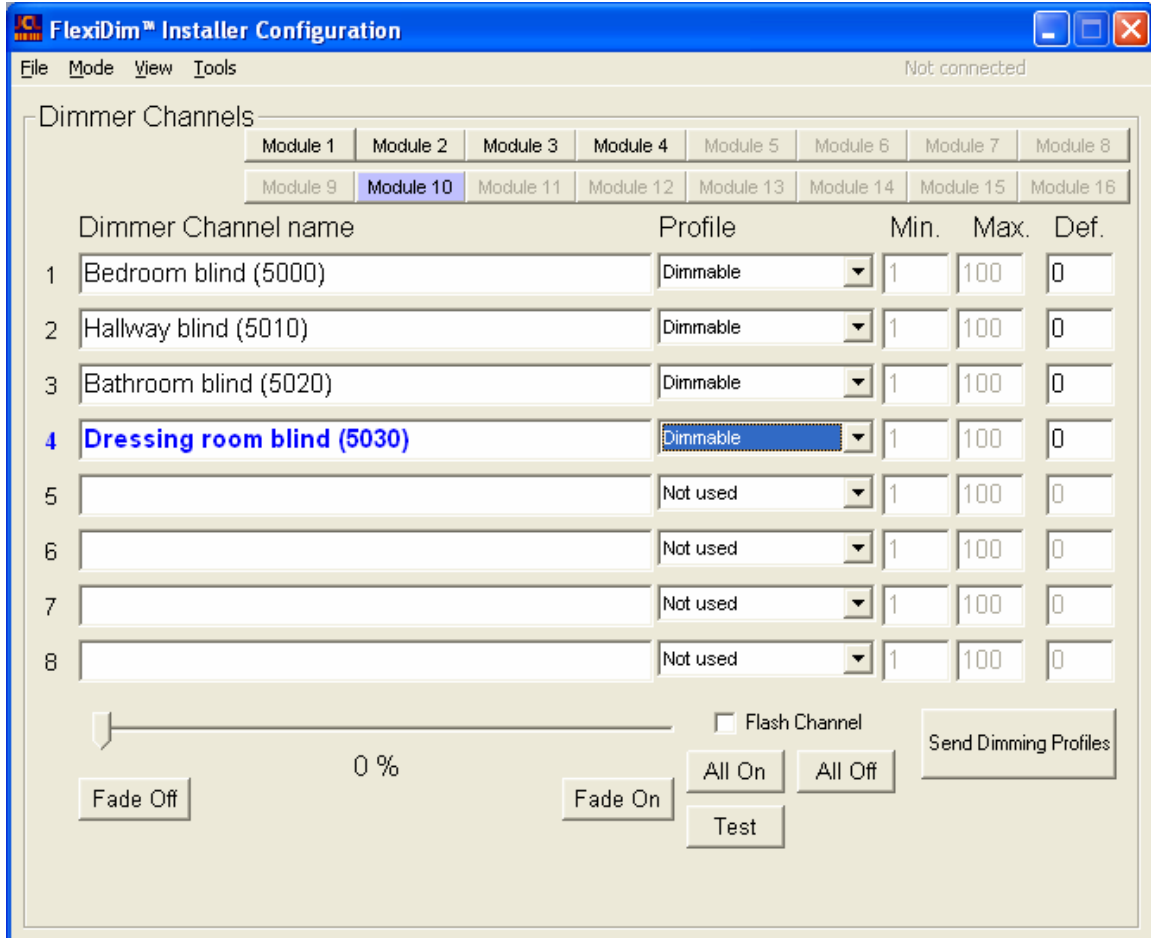
Port 5273

Apply

Program Dimmer Modules

Step 2

Switch to the View/Dimmers screen and select the dummy module you have enabled. Enter a name for each blind in channels 1-8 as required. Each blind control has an ID number (5010, 5020 etc.) which should be documented for each Module / Channel. It is useful to include the ID number in the name.

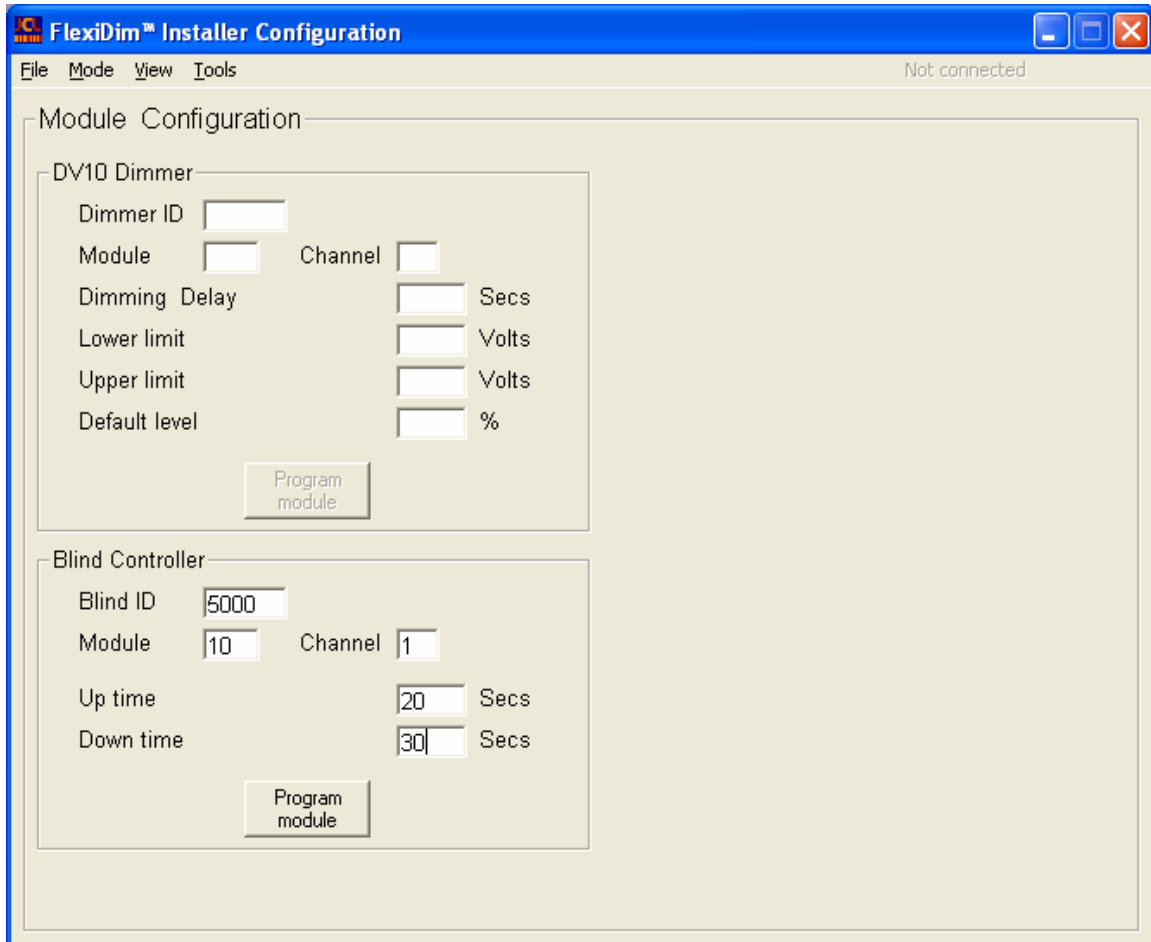


For example, if you had 4 blind controls you might enable module 10 and enter the blind names into channels 1 through 4.

Step 3

When this step is complete, switch to the Module Configuration View and fill out the Blind Control section for each blind controller. The blind controls must be connected and switched on for this stage.

Enter the blind control ID (eg. 5000), the Module and Channel that the blind control will occupy (from the previous step) and the default up & down times. Click Program Module



The screenshot shows the 'FlexiDim™ Installer Configuration' window. The title bar includes the software name and standard window controls. The menu bar contains 'File', 'Mode', 'View', and 'Tools'. The status bar indicates 'Not connected'. The main area is divided into two sections:

- Module Configuration:** This section contains input fields for 'Dimmer ID', 'Module', and 'Channel'. Below these are fields for 'Dimming Delay' (in Secs), 'Lower limit' (in Volts), 'Upper limit' (in Volts), and 'Default level' (in %). A 'Program module' button is located at the bottom of this section.
- Blind Controller:** This section contains input fields for 'Blind ID' (with the value '5000' entered), 'Module' (with the value '10' entered), and 'Channel' (with the value '1' entered). Below these are fields for 'Up time' (with the value '20' entered, in Secs) and 'Down time' (with the value '30' entered, in Secs). A 'Program module' button is located at the bottom of this section.